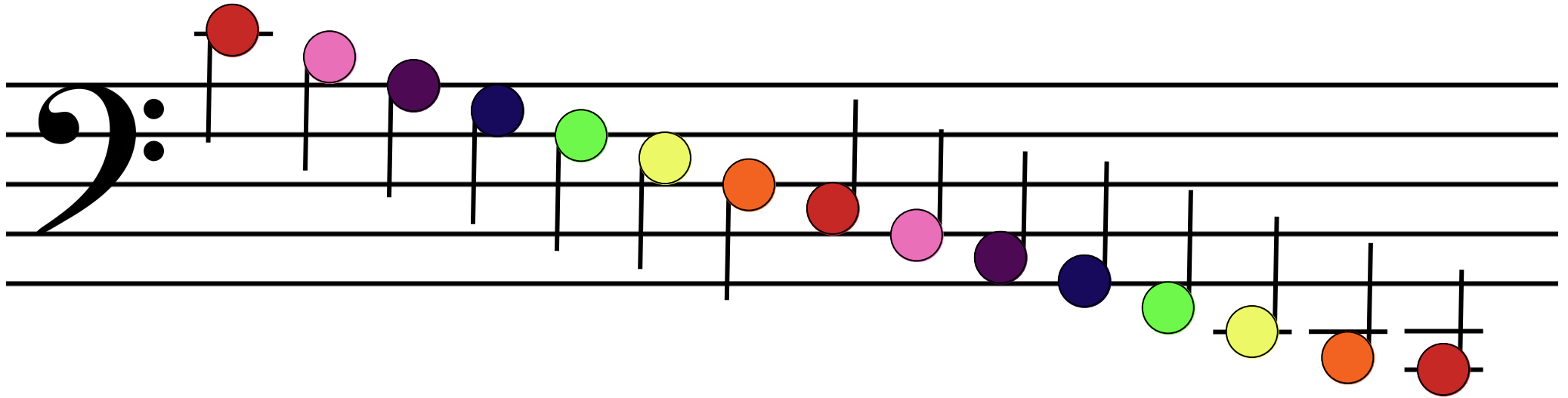


## COOKIE SPRINKLES



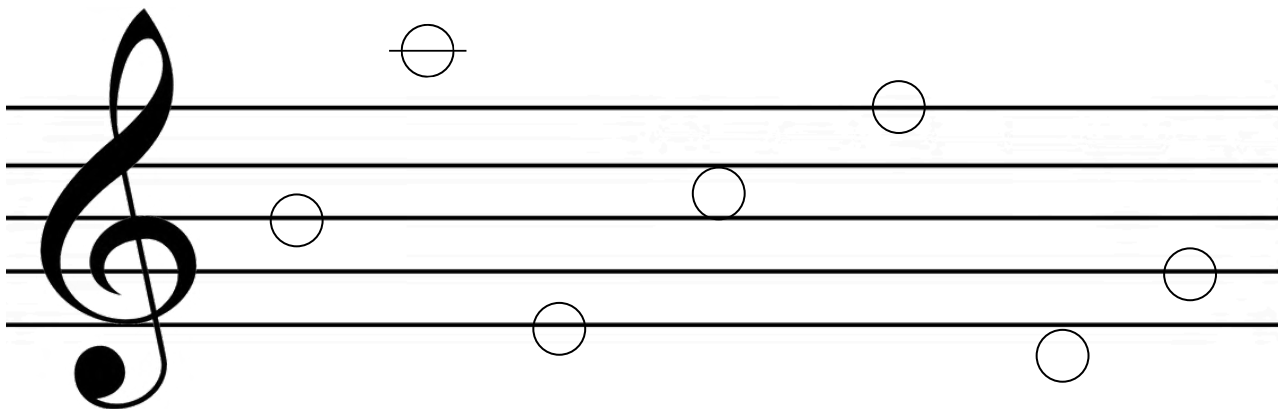
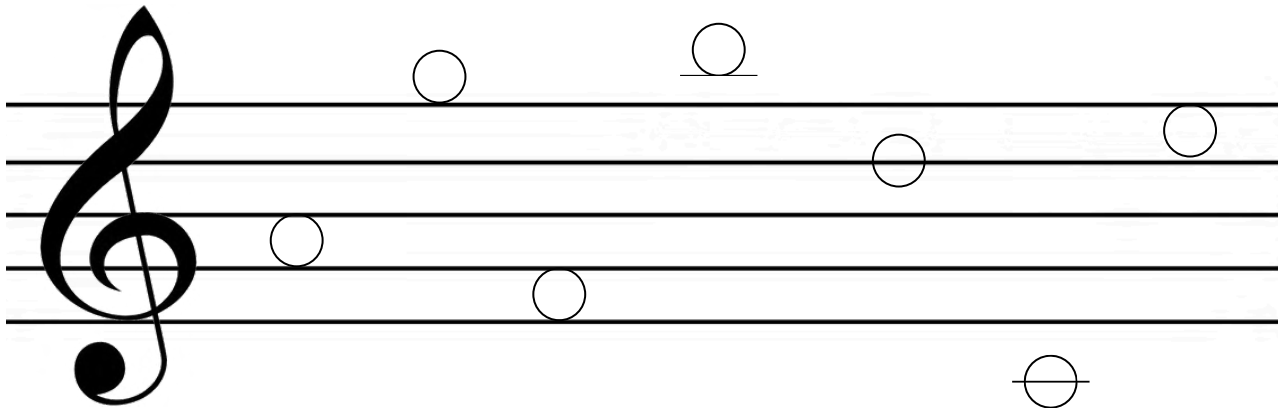


## COOKIE SPRINKLES



# CRACK THE COLOR CODE

## MUSIC EDITION - TREBLE CLEF



### COLOR CODE KEY



C	D	E	F	G	A	B
Red	Orange	Yellow	Green	Dark Blue	Purple	Pink

Mission: Help the Musical Detective!

- Color each note using the Color Code Key above.
- Once you finish, you'll have cracked the mystery!

# CRACK THE COLOR CODE

## MUSIC EDITION - BASS CLEF

The image shows two sets of musical staves, each with a bass clef. The first set consists of three staves with notes placed on the following lines: the top line of the first staff, the second line of the second staff, and the third line of the third staff. The second set consists of two staves with notes placed on the first line of the first staff, the second line of the second staff, and the third line of the third staff. Below the second set, there are two additional notes on lines that are not part of a staff.



### COLOR CODE KEY

C	D	E	F	G	A	B

Mission: Help the Musical Detective!

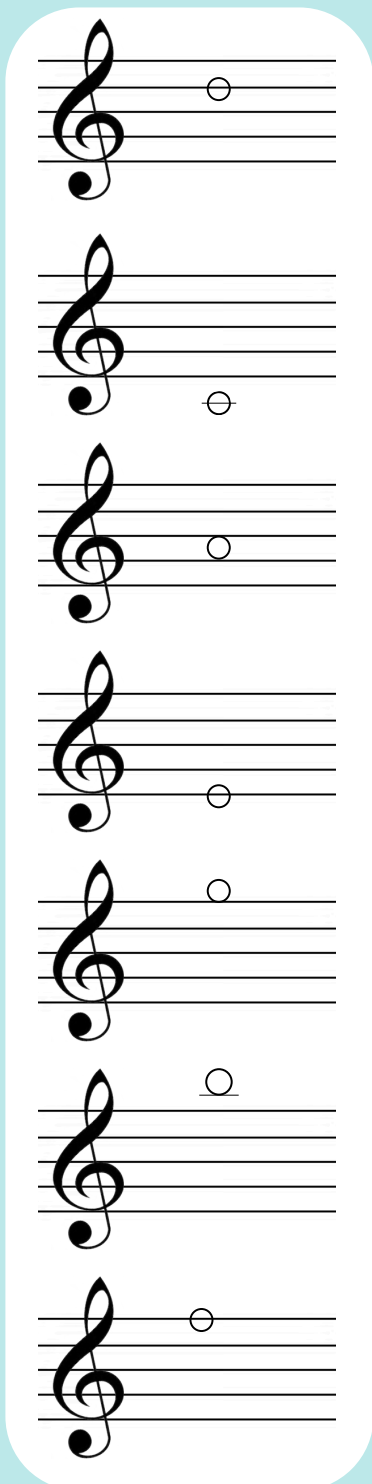
- Color each note using the Color Code Key above.
- Once you finish, you'll have cracked the mystery!



# TREBLE CLEF RAINBOW MATCH

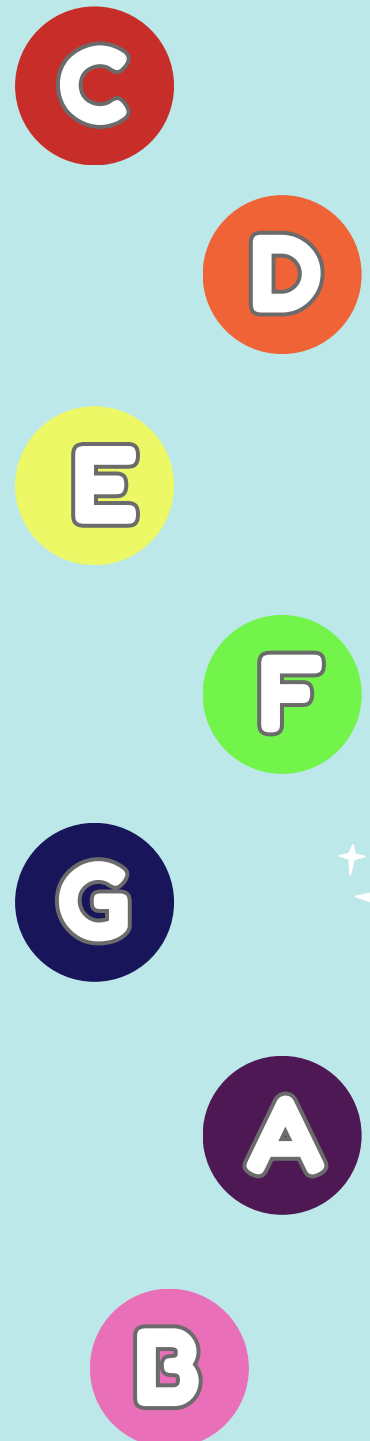
Match the notes in column A with the names in column B.

**A**



Seven treble clef staves, each with a single note on a different line or space from top to bottom: G4 (first space), A4 (second line), B4 (third space), C5 (fourth line), D5 (fifth line), E5 (first space above), and F5 (second space above).

**B**



Seven colored circles with letters inside, arranged from top to bottom: C (red), D (orange), E (yellow), F (green), G (dark blue), A (purple), and B (pink).

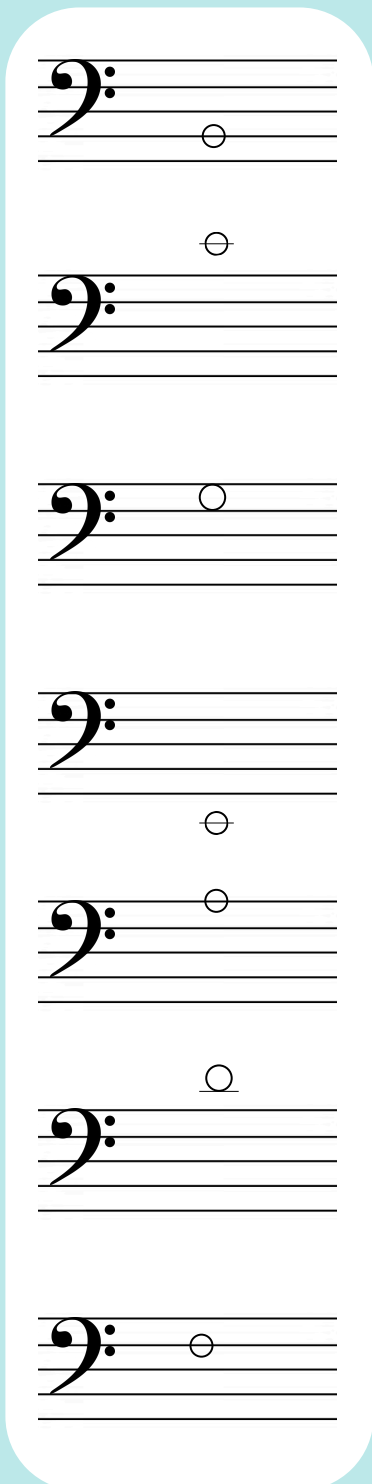


# BASS CLEF NOTES MATCH



Match the notes in column A with the names in column B.

**A**



Seven bass clef staves with notes on different lines and spaces:

- Staff 1: Note on the 1st line (G)
- Staff 2: Note on the 2nd space (A)
- Staff 3: Note on the 3rd line (B)
- Staff 4: Note on the 4th space (C)
- Staff 5: Note on the 5th line (D)
- Staff 6: Note on the 1st space (E)
- Staff 7: Note on the 2nd line (F)

**B**

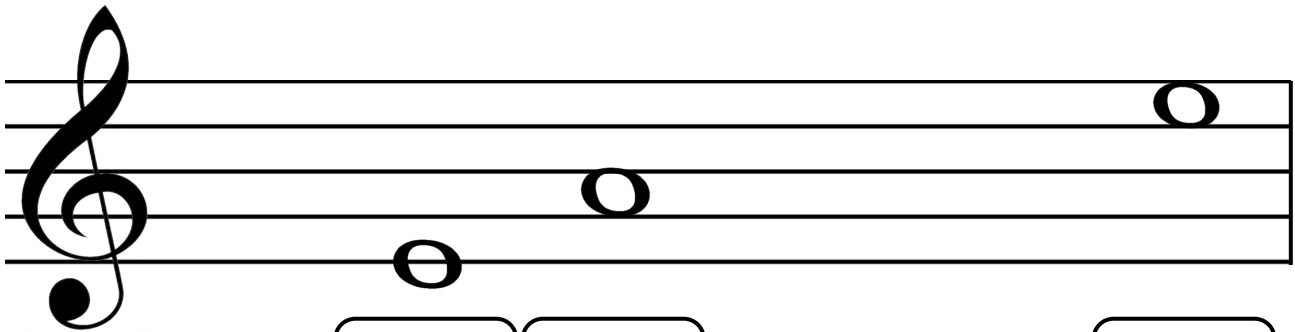




# TREBLE CLEF NOTES QUEST

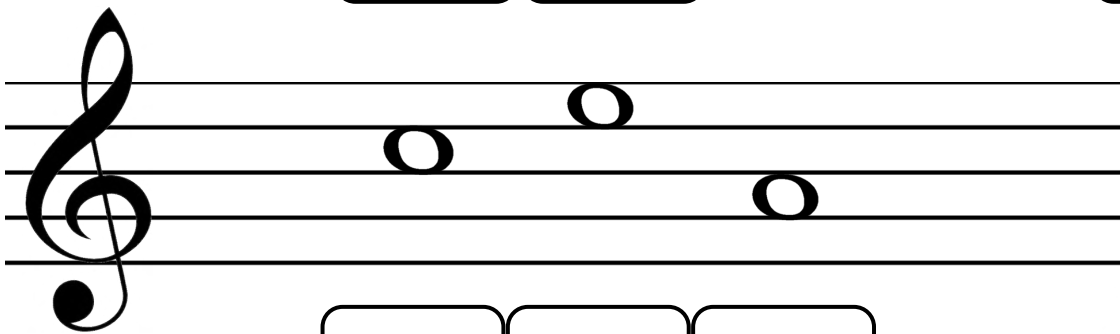


Identify the notes correctly to find the hidden words.



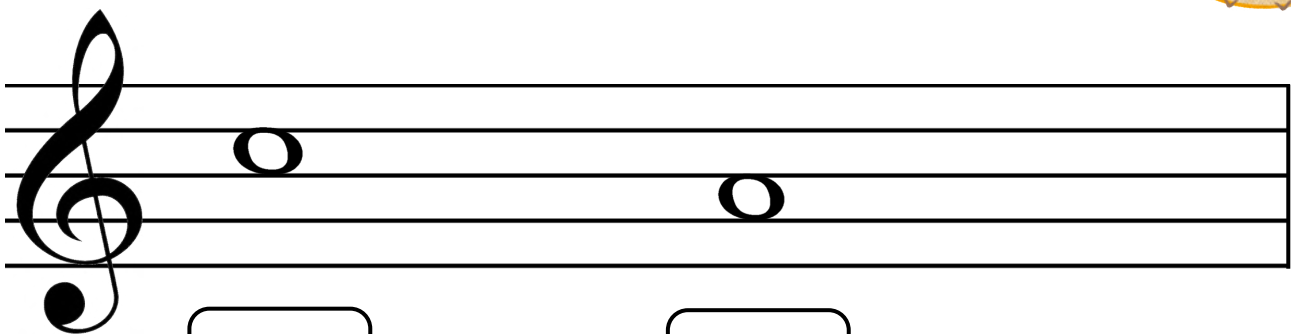
S

H O R S



O

N

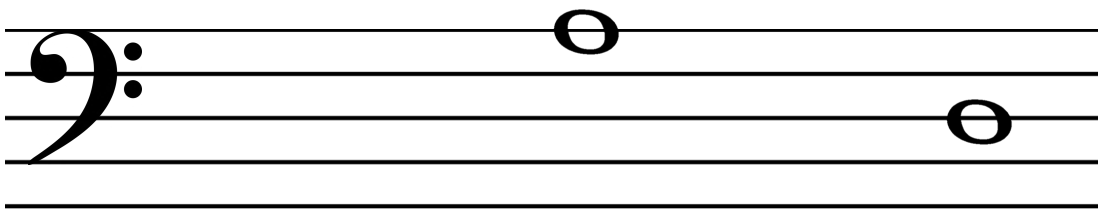


O R

L S

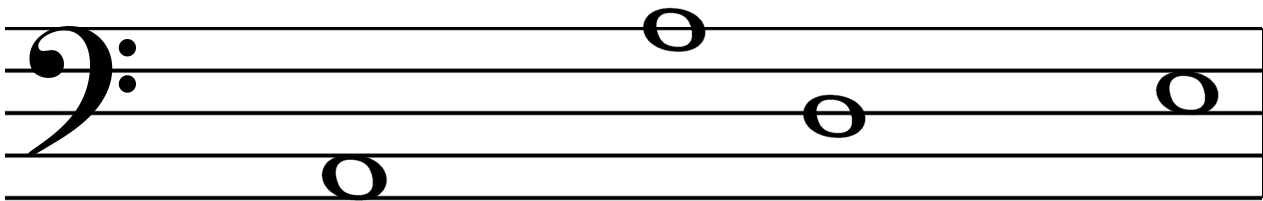
# BASS CLEF NOTES QUEST

Identify the notes correctly to find the hidden words.



I S L

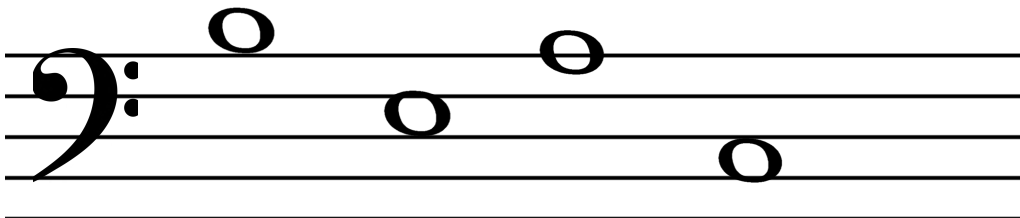
N



P

R

I S

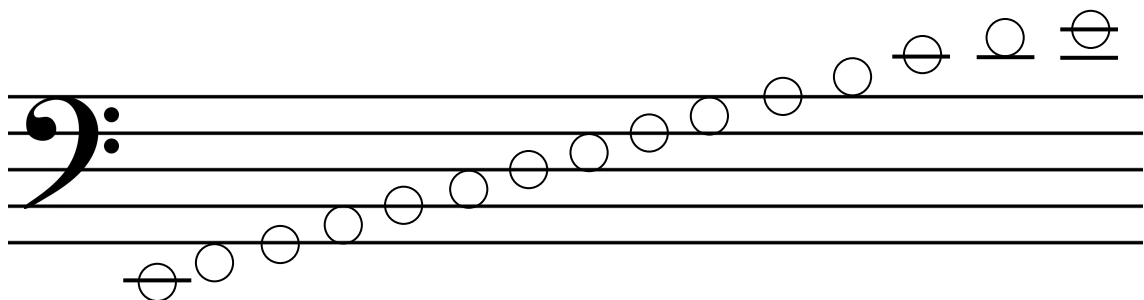
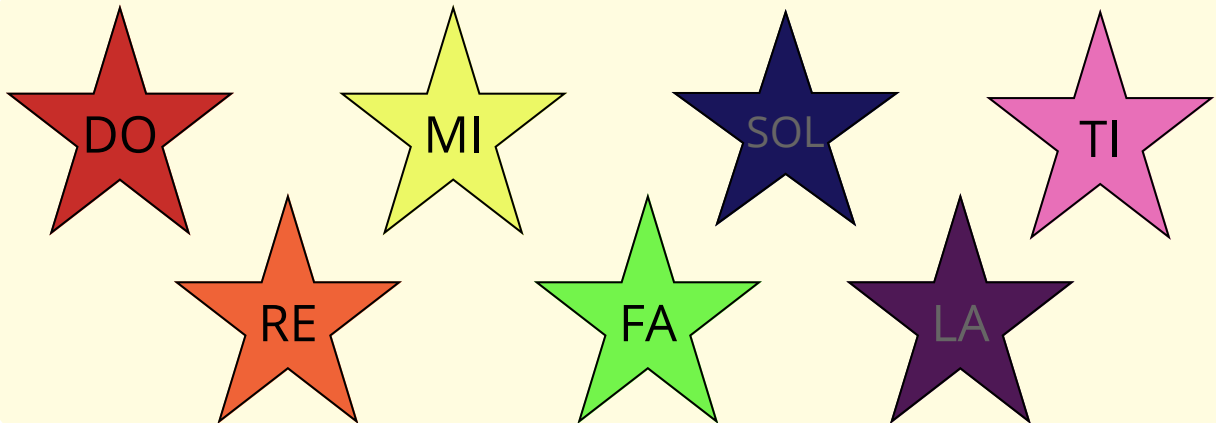
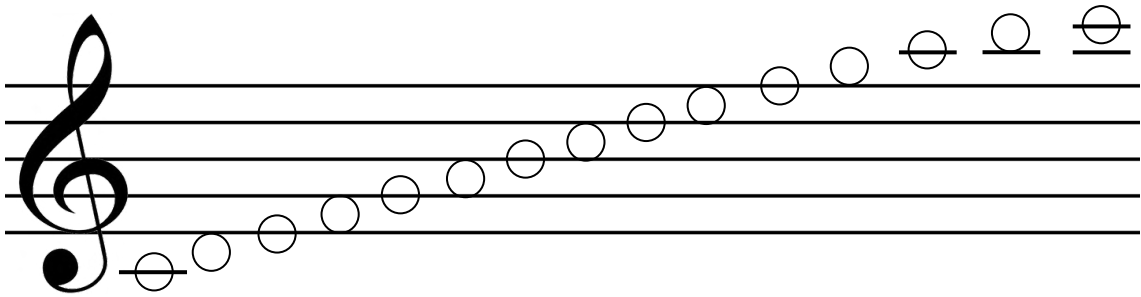


H

# DO-RE-MI IN THE STARS

## Can You Find Where Each Singing Star Belongs?

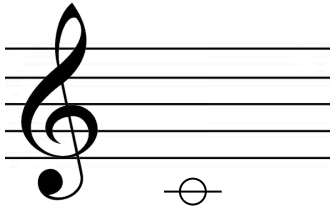
- Identify the note
- Match it to the correct solfege name
- Color it using the matching star's color



# RIGHT NOTE OR NOT?

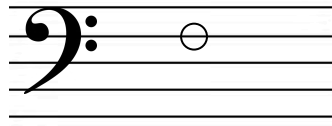


Mark "✓" if the note name is correct and "X" if it is not!



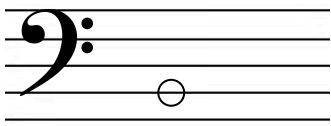
C

.....



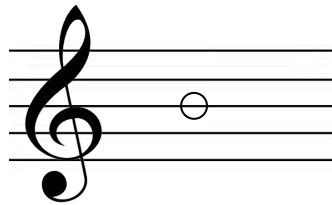
F

.....



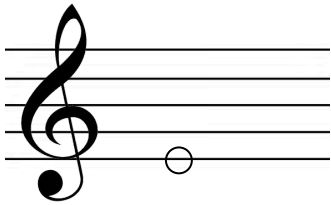
G

.....



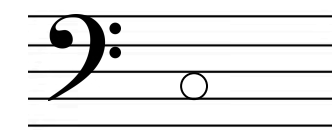
D

.....



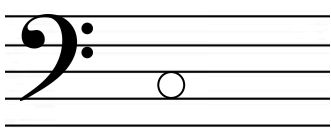
E

.....



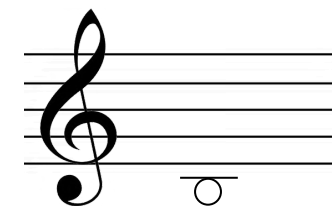
A

.....



C

.....



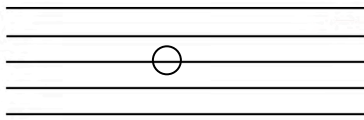
B

.....



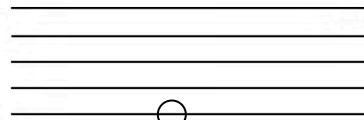
# Which Clef Fits?

Draw the suitable clef (Treble clef/ Bass clef) in front of each note.



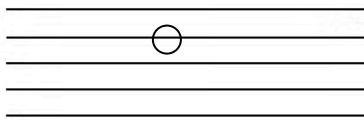
**D**

.....



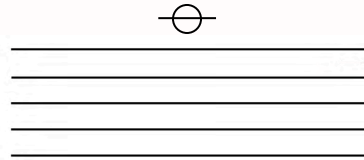
**E**

.....



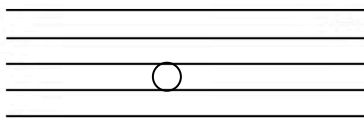
**F**

.....



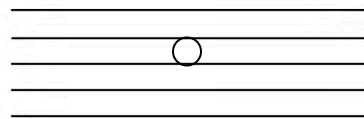
**C**

.....



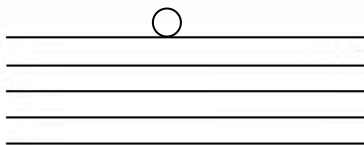
**A**

.....



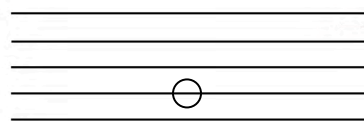
**E**

.....



**B**

.....



**G**

.....



# MUSIC PUZZLE

Complete the puzzle using the hints given.

1		2			3
				2	
			4		
		3			
5					6
		4			

## HINTS - Across

1

2

3

4

5

## HINTS - Down

1

2

3

4

5

6

